

bedea Datentechnik SiteSurvey

Ralf Damm

Wednesday, February 14, 2007 16:23:00

Site Survey Information

Survey Name Dipl. Ing. (FH) Ralf Damm
Survey Location Company: bedea Berkenhoff & Drebes GmbH Address: Strasse 1 Building: Halle 1 Floor: 1. OG Area Description: Fertigung Company Contact: Ralf Damm
Surveyor Ralf Damm
Date of Survey Wednesday, February 14, 2007 16:23:00
Survey Statistics Total Area: 20964 sq m Survey Trail Length: 2465 m
Reference Points None Found
Surveyor Notes <p>Beim Meßobjekt handelt es sich um eine Etage einer Fertigungs- und Lagerhalle, die in weiten Teilen lichtoffen ist. Im Bereich der Außenwände sind Bürobereiche konstruiert, die jedoch meist fest verkabelt und mit 100BaseT Anschlüssen versorgt sind. Die Halle eignet sich für den Einsatz von Datenerfassungsterminal über die WLAN Technologie 802.11 b/g.</p>

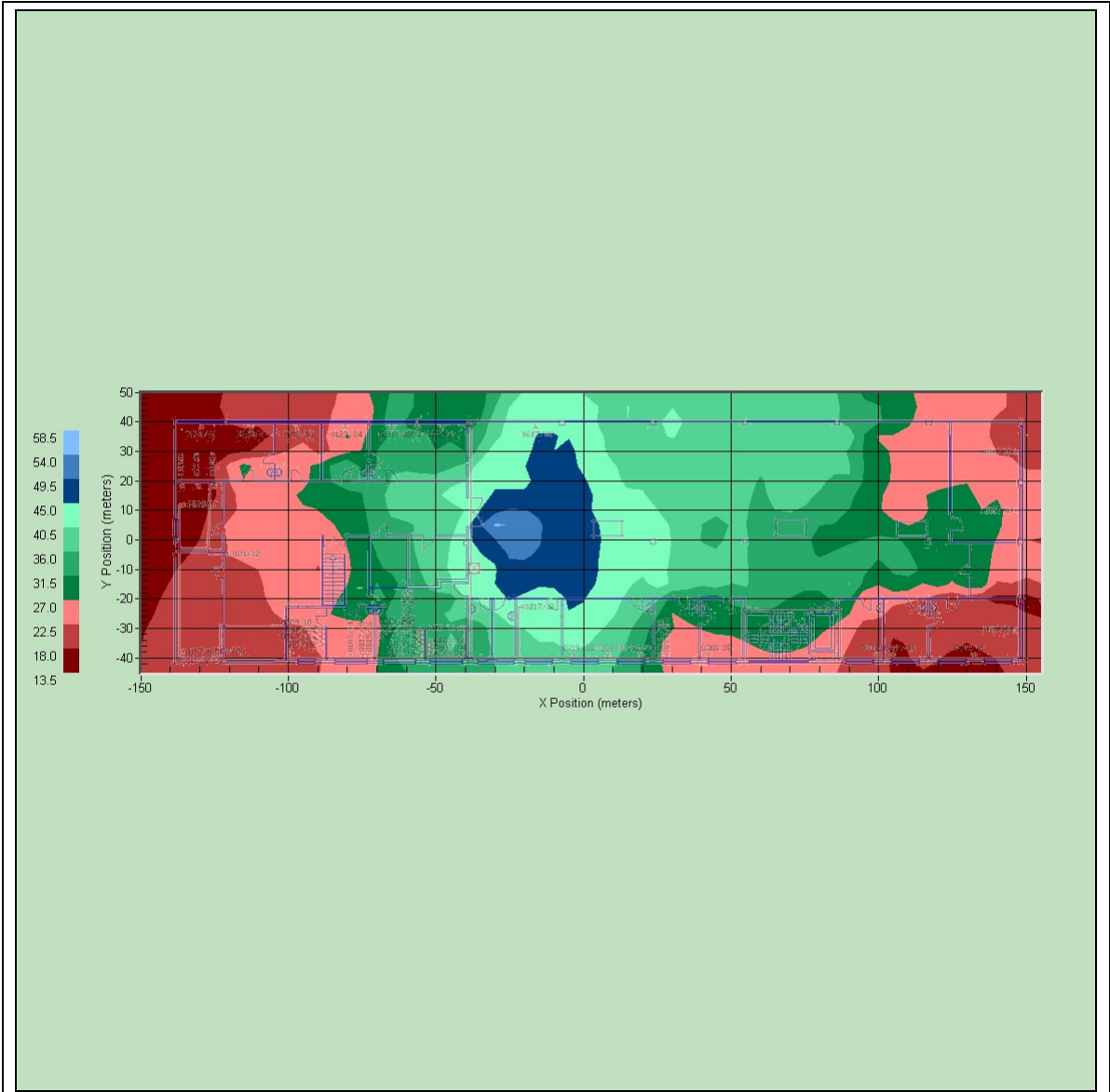


Figure 1

Abdeckung

Innerhalb der grün umrandeten Region können Sie mit der max. möglichen Datenrate Rechnen.

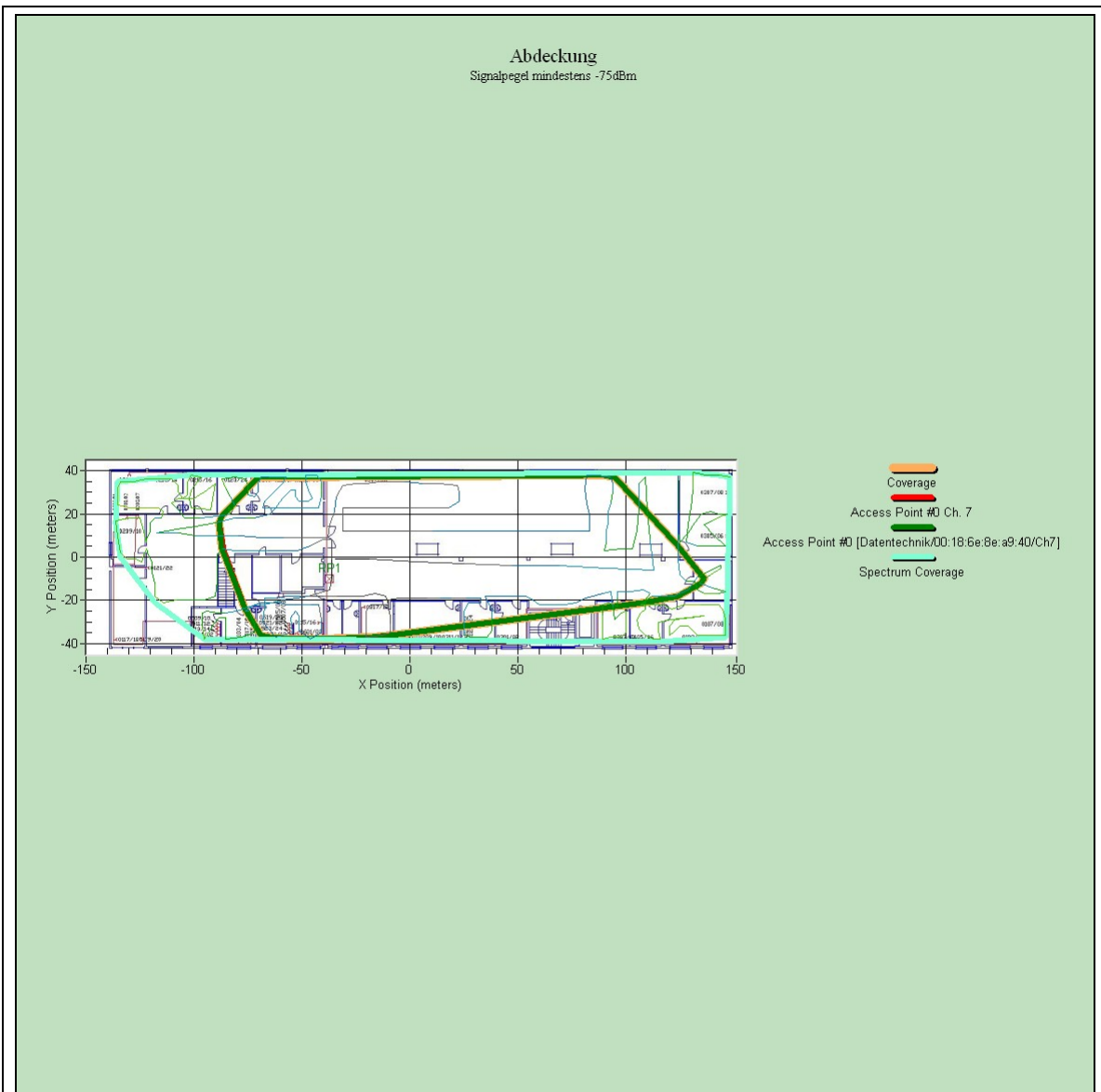


Figure 2

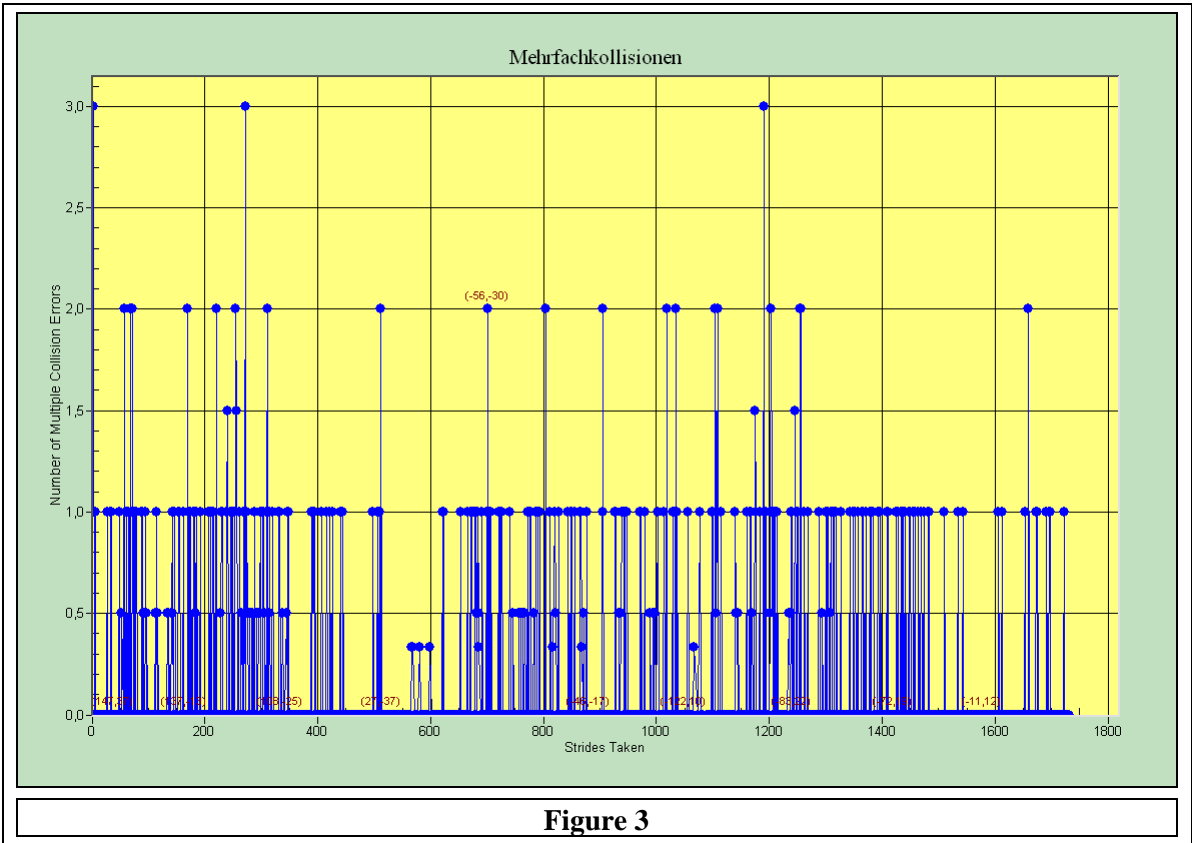


Figure 3

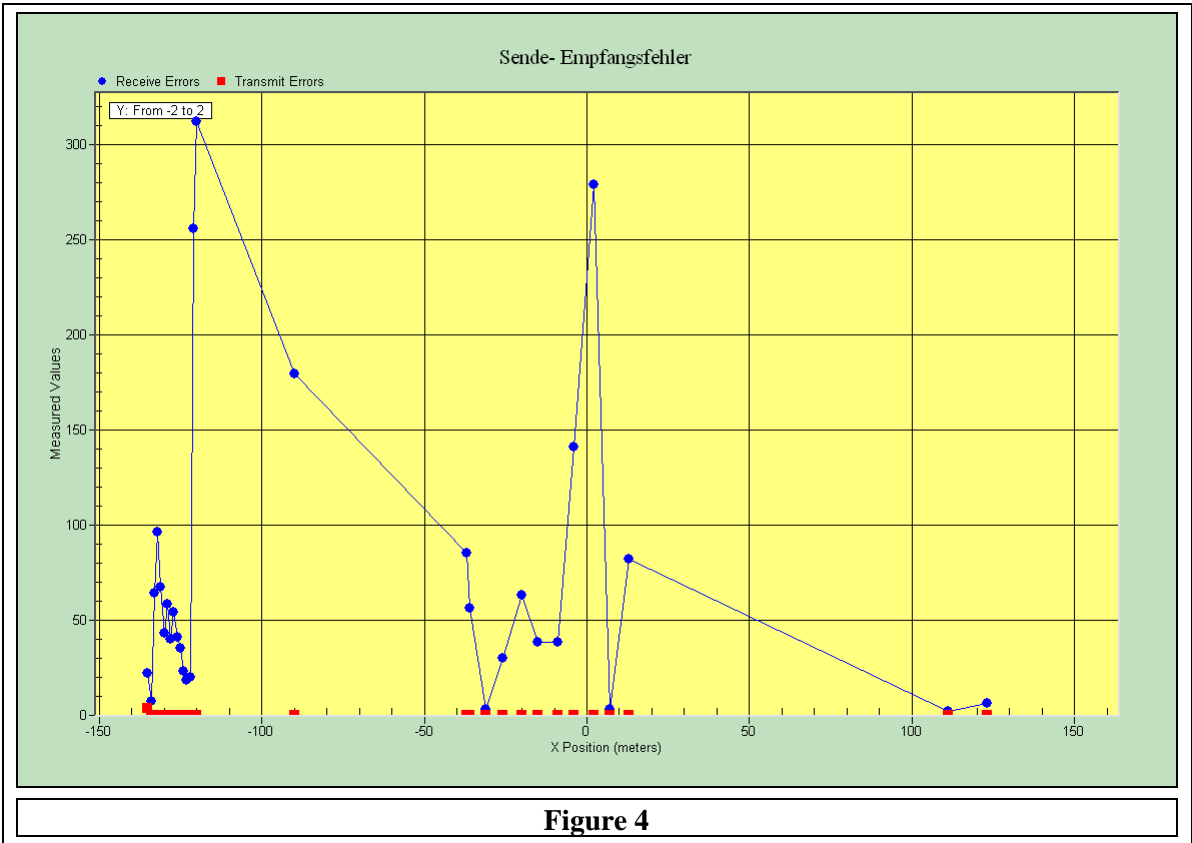


Figure 4

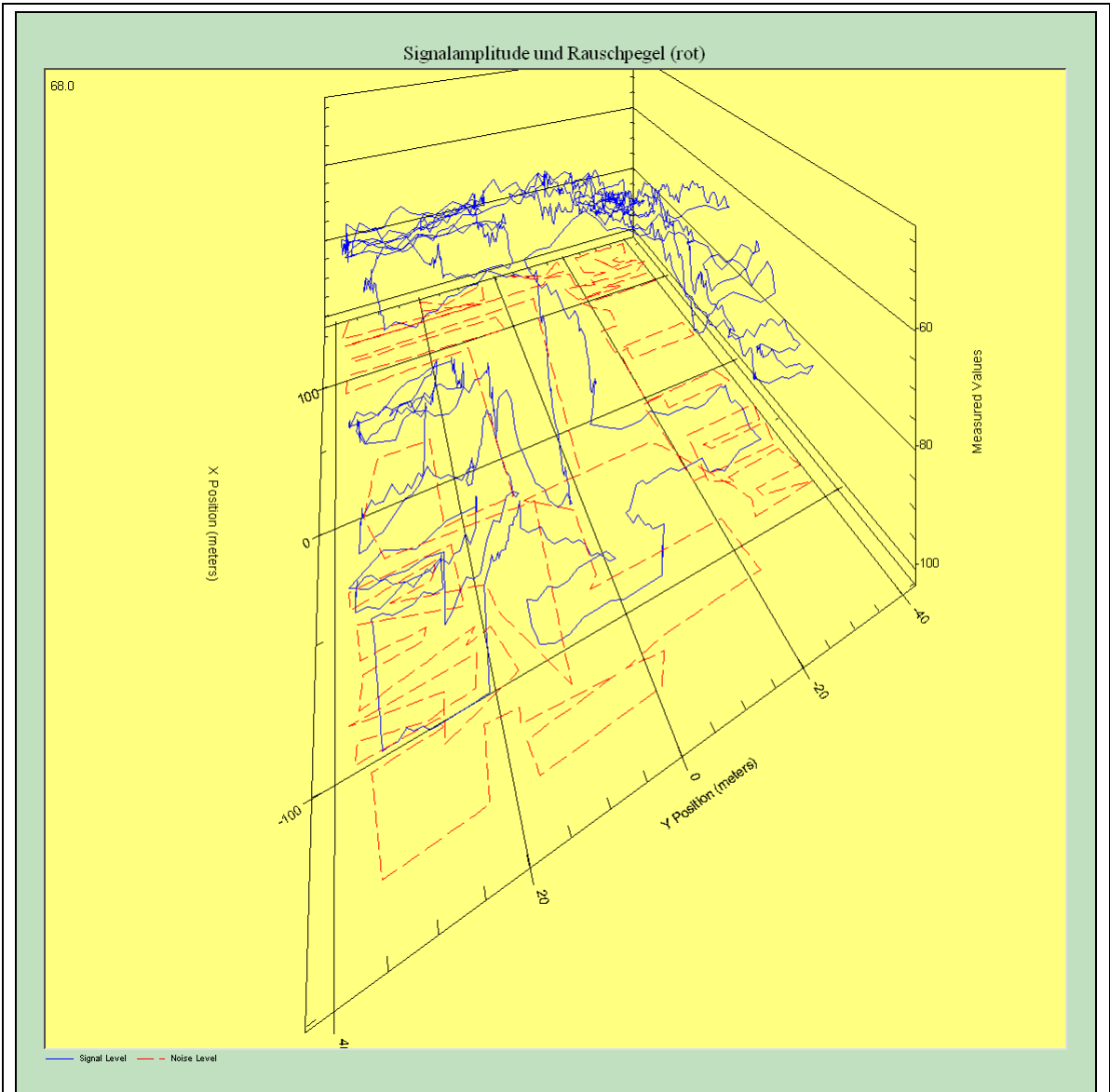


Figure 5

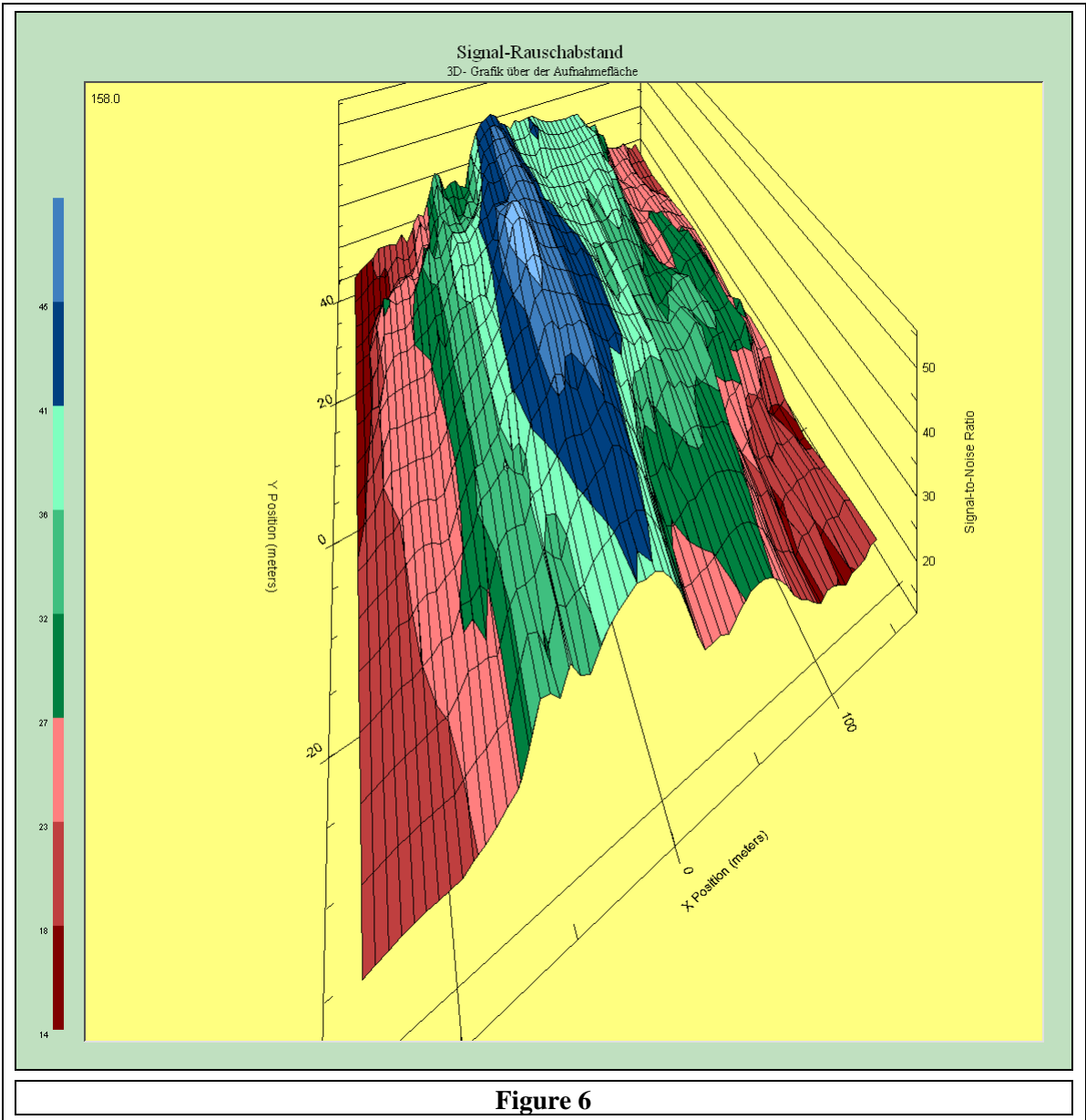


Tabelle: Messwerte

↓ Y	X →	-137 – -113m	-113 – -89m	-89 – -65m	-65 – -41m	-41 – -17m	-17 – 7m	7 – 31m	31 – 55m	55 – 79m	79 – 103m	103 – 127m	127 – 151m
39 – 15m	Data Points	172	184	238	190	72	46	48	0	0	84	80	104
	Signal to Noise Ratio	19.7 $\sigma=4.61$	21.4 $\sigma=2.74$	29.5 $\sigma=4.40$	30.9 $\sigma=1.87$	42.9 $\sigma=2.08$	42.3 $\sigma=2.39$	39.8 $\sigma=1.79$	0.0 $\sigma=0.00$	0.0 $\sigma=0.00$	32.0 $\sigma=3.77$	24.8 $\sigma=1.59$	22.4 $\sigma=1.16$
	Signal Level	-80.3 $\sigma=4.61$	-78.6 $\sigma=2.74$	-70.5 $\sigma=4.40$	-69.1 $\sigma=1.87$	-57.1 $\sigma=2.08$	-57.7 $\sigma=2.39$	-60.2 $\sigma=1.79$	0.0 $\sigma=0.00$	0.0 $\sigma=0.00$	-68.0 $\sigma=3.77$	-75.2 $\sigma=1.59$	-77.6 $\sigma=1.16$
	Spectrum Max	-42.7 $\sigma=9.71$	-46.5 $\sigma=9.64$	-47.2 $\sigma=9.19$	-46.1 $\sigma=7.58$	-50.1 $\sigma=8.33$	-48.0 $\sigma=8.36$	-49.0 $\sigma=8.99$	0.0 $\sigma=0.00$	0.0 $\sigma=0.00$	-48.2 $\sigma=8.55$	-49.0 $\sigma=6.86$	-48.2 $\sigma=7.38$
	Spectrum Ave	-58.5 $\sigma=2.58$	-59.6 $\sigma=1.90$	-59.8 $\sigma=1.57$	-59.6 $\sigma=1.48$	-60.2 $\sigma=1.06$	-60.2 $\sigma=0.91$	-60.0 $\sigma=1.32$	0.0 $\sigma=0.00$	0.0 $\sigma=0.00$	-60.0 $\sigma=1.44$	-60.2 $\sigma=1.10$	-60.2 $\sigma=0.77$
	Channels	7	7	7	7	7	7	7			7	7	7
15 – -9m	Data Points	134	56	54	48	60	26	30	26	26	54	70	84
	Signal to Noise Ratio	20.7 $\sigma=3.28$	26.0 $\sigma=1.70$	32.2 $\sigma=2.98$	38.8 $\sigma=2.57$	45.9 $\sigma=3.73$	45.4 $\sigma=1.76$	39.9 $\sigma=1.91$	36.2 $\sigma=1.30$	35.7 $\sigma=3.01$	28.9 $\sigma=3.01$	27.6 $\sigma=2.24$	24.9 $\sigma=1.80$
	Signal Level	-79.3 $\sigma=3.28$	-74.0 $\sigma=1.70$	-67.8 $\sigma=2.98$	-61.2 $\sigma=2.57$	-54.1 $\sigma=3.73$	-54.6 $\sigma=1.76$	-60.1 $\sigma=1.91$	-63.8 $\sigma=1.30$	-64.3 $\sigma=3.01$	-71.1 $\sigma=3.01$	-72.4 $\sigma=2.24$	-75.1 $\sigma=1.80$
	Spectrum Max	-43.3 $\sigma=8.57$	-45.1 $\sigma=8.60$	-46.4 $\sigma=7.09$	-49.8 $\sigma=8.15$	-50.1 $\sigma=9.28$	-51.9 $\sigma=7.77$	-48.5 $\sigma=8.50$	-48.2 $\sigma=9.58$	-51.2 $\sigma=9.77$	-50.1 $\sigma=6.13$	-50.4 $\sigma=6.99$	-49.3 $\sigma=5.76$
	Spectrum Ave	-59.1 $\sigma=1.84$	-59.4 $\sigma=1.64$	-59.5 $\sigma=2.37$	-60.1 $\sigma=1.08$	-60.2 $\sigma=1.11$	-60.5 $\sigma=0.27$	-60.2 $\sigma=1.00$	-60.3 $\sigma=0.62$	-60.4 $\sigma=0.81$	-60.3 $\sigma=0.61$	-60.3 $\sigma=0.75$	-60.3 $\sigma=0.49$
	Channels	7	7	7	7	7	7	7	7	7	7	7	7
-9 – -33m	Data Points	24	78	148	168	78	124	54	84	46	148	178	154
	Signal to Noise Ratio	21.8 $\sigma=0.97$	24.1 $\sigma=1.43$	29.6 $\sigma=3.28$	36.5 $\sigma=3.70$	44.2 $\sigma=2.50$	44.9 $\sigma=1.81$	35.2 $\sigma=5.57$	33.5 $\sigma=3.56$	32.3 $\sigma=1.58$	26.5 $\sigma=5.08$	22.3 $\sigma=4.33$	22.2 $\sigma=4.05$
	Signal Level	-78.3 $\sigma=0.97$	-75.9 $\sigma=1.43$	-70.4 $\sigma=3.28$	-63.5 $\sigma=3.70$	-55.8 $\sigma=2.50$	-55.1 $\sigma=1.81$	-64.8 $\sigma=5.57$	-66.5 $\sigma=3.56$	-67.7 $\sigma=1.58$	-73.5 $\sigma=5.08$	-77.7 $\sigma=4.33$	-77.8 $\sigma=4.05$
	Spectrum Max	-47.2 $\sigma=10.94$	-44.8 $\sigma=8.87$	-49.0 $\sigma=7.31$	-50.2 $\sigma=7.12$	-48.0 $\sigma=10.18$	-50.7 $\sigma=8.49$	-51.3 $\sigma=7.64$	-48.9 $\sigma=8.34$	-50.7 $\sigma=9.03$	-47.9 $\sigma=7.51$	-47.6 $\sigma=8.46$	-47.0 $\sigma=8.24$
	Spectrum Ave	-59.7 $\sigma=1.38$	-59.3 $\sigma=1.71$	-60.0 $\sigma=1.03$	-60.3 $\sigma=0.59$	-59.9 $\sigma=1.27$	-60.2 $\sigma=1.24$	-60.2 $\sigma=1.48$	-60.2 $\sigma=1.00$	-60.3 $\sigma=0.83$	-59.8 $\sigma=2.01$	-59.9 $\sigma=1.64$	-59.6 $\sigma=2.70$
	Channels	7	7	7	7	7	7	7	7	7	7	7	7

Beispielmessung (Sample SiteSurvey)

-33 - -57m	Data Points	0	20	38	32	12	26	16	16	0	34	68	32
	Signal to Noise Ratio	0.0 $\sigma=0.00$	22.3 $\sigma=0.67$	26.2 $\sigma=2.99$	34.4 $\sigma=1.89$	40.5 $\sigma=0.84$	41.2 $\sigma=1.28$	25.0 $\sigma=1.20$	25.9 $\sigma=1.13$	0.0 $\sigma=0.00$	18.8 $\sigma=1.25$	18.9 $\sigma=1.53$	19.3 $\sigma=0.79$
	Signal Level	0.0 $\sigma=0.00$	-77.7 $\sigma=0.67$	-73.8 $\sigma=2.99$	-65.6 $\sigma=1.89$	-59.5 $\sigma=0.84$	-58.8 $\sigma=1.28$	-75.0 $\sigma=1.20$	-74.1 $\sigma=1.13$	0.0 $\sigma=0.00$	-81.2 $\sigma=1.25$	-81.1 $\sigma=1.53$	-80.7 $\sigma=0.79$
	Spectrum Max	0.0 $\sigma=0.00$	-43.9 $\sigma=9.95$	-48.1 $\sigma=9.44$	-52.4 $\sigma=6.00$	-49.0 $\sigma=9.36$	-48.3 $\sigma=9.26$	-44.3 $\sigma=11.08$	-43.9 $\sigma=9.88$	0.0 $\sigma=0.00$	-44.5 $\sigma=10.45$	-39.4 $\sigma=9.38$	-45.3 $\sigma=9.69$
	Spectrum Ave	0.0 $\sigma=0.00$	-58.9 $\sigma=2.23$	-59.9 $\sigma=1.78$	-60.4 $\sigma=0.48$	-59.9 $\sigma=1.81$	-59.7 $\sigma=1.64$	-59.3 $\sigma=1.70$	-59.8 $\sigma=1.37$	0.0 $\sigma=0.00$	-59.5 $\sigma=1.51$	-57.8 $\sigma=3.10$	-59.8 $\sigma=1.26$
	Channels		7	7	7	7	7	7	7		7	7	7

Figure 7